

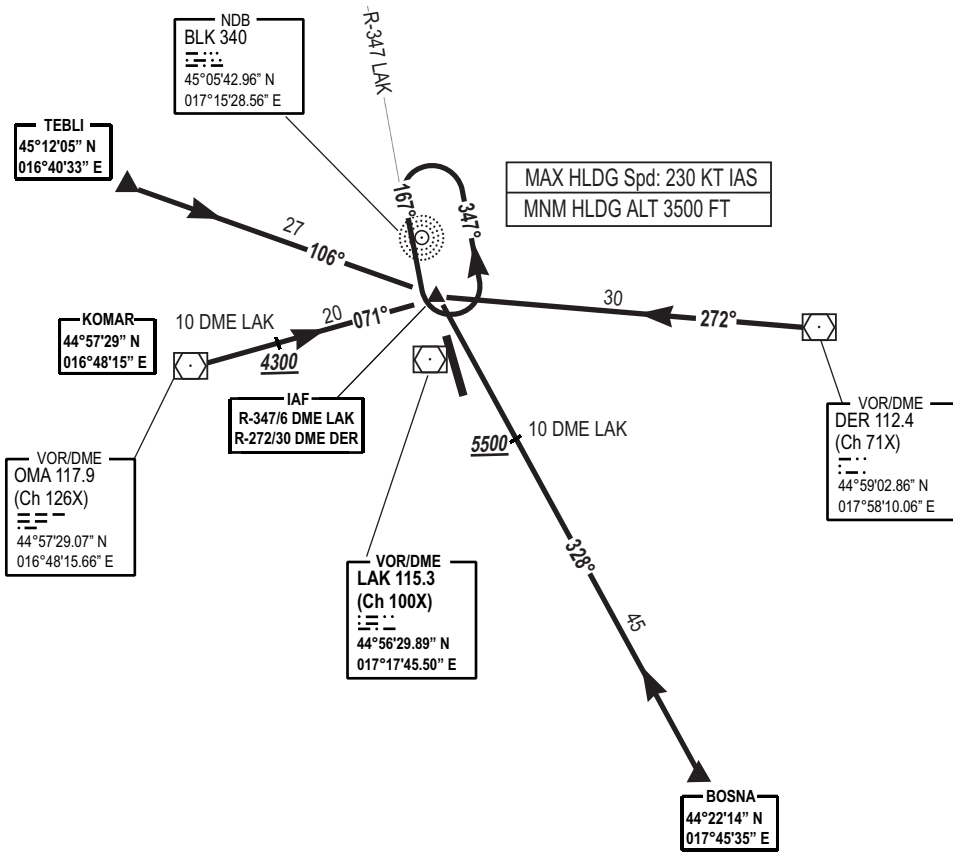
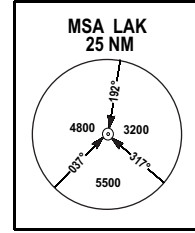
**STANDARD ARRIVAL  
CHART INSTRUMENT  
(STAR) - ICAO**

AD ELEV 401 FT

TRANSITION  
ALTITUDE  
10 000 FT  
VAR 5°E (2020)

TWR/APP 133.075  
SPARE 124.175  
ATIS 122.625

**BANJA LUKA (LQBK)  
LAK STAR RWY 16/34**



CHG: LAK VOR/DME COORDINATES;

**NOT TO SCALE**  
COORDINATES EXPRESSED IN WGS-84  
BEARINGS, TRACKS AND RADIALS ARE MAGNETIC  
ALTITUDES AND ELEVATIONS ARE IN FT  
DISTANCES ARE IN NM

THIS PAGE INTENTIONALLY LEFT BLANK